



LARGE INTERFACE PANEL

THE PRODUCT

Generously dimensioned, comfortable control and interface panels distinguish the MOTEC desktop device from conventional systems. Different sizes and combinations offer a wide selection of attractive cases. Thanks to an innovative snap-in system, you can minimise your assembly work and at the same time improve the visual attractiveness of your products.

APPLICATIONS

Measuring and control technology, feedback control, peripheral devices and interfaces, switchboxes, modems, medical field and laboratory technology.

PROTECTION CLASS < IP 40

YOUR ADVANTAGE

Quick mounting due to screwless assembly. Saves time and costs. Disassembly can be carried out by a small flat screwdriver.

Modern and fashionable design.

Different heights of cases for individual configurations.

Guide grooves for the vertical insertion of partitions and printed circuit boards.

Sloping control panel with recessed area to protect membrane keyboards available as an accessory. Also suitable for mounting LCDs.

Self-adhesive, transparent case feet ensure reliable desk-top positioning.

Versions with handle bar for tilting the unit (M, L). Adjustable at increments of 30°.

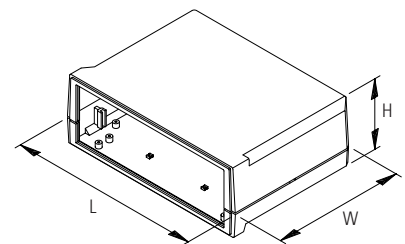
STANDARD COLOURS

■ Off-white, RAL 9002.

MAX. SIZE OF PCB

MOTEC	L x W in mm
S	128 x 90
M	178 x 125
L	208 x 150

Detailed drawings see our website.

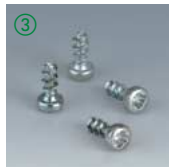
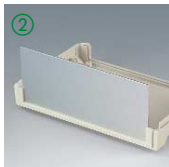


ENCLOSURES

MOTEC	Outside dim. in mm			Equipment		Part-No.	
	L	W	H	case shells base/top	handle bar* ¹	ABS (UL 94 HB)	ABS (UL 94 V-0)
S	155	105	40	flat / flat	—	B 30 15 117	B 30 15 217
	155	105	65	flat / high	—	B 30 15 127	B 30 15 227
	155	105	90	high / high	—	B 30 15 137	B 30 15 237
M	205	140	50	flat / flat	—	B 30 20 117	B 30 20 217
	205	140	75	flat / high	—	B 30 20 127	B 30 20 227
	205	140	75	flat / high	•	B 30 20 147	—
	205	140	100	high / high	—	B 30 20 137	B 30 20 237
L	235	165	60	flat / flat	—	B 30 23 117	B 30 23 217
	235	165	85	flat / high	—	B 30 23 127	B 30 23 227
	235	165	85	flat / high	•	B 30 23 147	—
	235	165	110	high / high	—	B 30 23 137	B 30 23 237

ACCESSORIES

Article	For enclosure MOTEC	Version	Part-No.	
			ABS (UL 94 HB)	ABS (UL 94 V-0)
① Sloping control panel	S flat / high	off-white, RAL 9002, recessed area 137.6 x 46.7 mm, insertion into the guides	B 31 15 167	B 31 15 267
	M flat / high	off-white, RAL 9002, recessed area 186.6 x 54.3 mm, insertion into the guides	B 31 20 167	B 31 20 267
	L flat / high	off-white, RAL 9002, recessed area 214.6 x 62.7 mm, insertion into the guides	B 31 23 167	B 31 23 267
	L high / high	off-white, RAL 9002, recessed area 214.6 x 90.7 mm, insertion into the guides	B 31 23 177	B 31 23 277
② Front / rear panel	S flat / flat	matt anodized aluminium, 136 x 32 x 1.5 mm, simple insertion into guides, 1 pc	B 31 15 100	
	S flat / high	matt anodized aluminium, 136 x 57 x 1.5 mm, simple insertion into guides, 1 pc	B 31 15 110	
	S high / high	matt anodized aluminium, 136 x 82 x 1.5 mm, simple insertion into guides, 1 pc	B 31 15 120	
	M flat / flat	matt anodized aluminium, 185 x 42 x 1.5 mm, simple insertion into guides, 1 pc	B 31 20 100	
	M flat / high	matt anodized aluminium, 185 x 67 x 1.5 mm, simple insertion into guides, 1 pc	B 31 20 110	
	M high / high	matt anodized aluminium, 185 x 92 x 1.5 mm, simple insertion into guides, 1 pc	B 31 20 120	
	L flat / flat	matt anodized aluminium, 214 x 52 x 1.5 mm, simple insertion into guides, 1 pc	B 31 23 100	
	L flat / high	matt anodized aluminium, 214 x 77 x 1.5 mm, simple insertion into guides, 1 pc	B 31 23 110	
	L high / high	matt anodized aluminium, 214 x 102 x 1.5 mm, simple insertion into guides, 1 pc	B 31 23 120	
③ Set of screws	S, M, L	4 x ø 2.5 x 6 mm, for mounting PCBs	A 91 99 008	



*¹ side arms and push button of reinforced polyamide. Middle section aluminium profile;
the mounting of the handle bar to the side panels with draft will hardly affect the load capacity and performance